

Rugby Area Committee – 25th January 2007

Exclusions from school

Report of the Strategic Director for Children, Young People and Families

Recommendation:

That Members note the information given on exclusions from school, lend their support to the introduction of new strategies and comment further as appropriate.

1. Introduction

- 1.1 Exclusion from school, whether permanent or fixed term, is a serious action which may have a lasting impact on a child's education and future life chances. For this reason, the reduction of exclusions and better management of behaviour in schools is a high priority both locally and nationally. In Warwickshire, permanent exclusions rose sharply in 2004/05. They have reduced in number over the last academic year, but remain unacceptably high. Over the next academic year, initiatives will be introduced that aim to reduce both fixed-term and permanent exclusions. This report comments on current figures and summarises these initiatives.
- 1.2 Targets set across the county are seen to be aspirational. The current overall target of reducing exclusions to 50% of current levels would bring us in line with the best performing authorities.

2. Current data

- 2.1 Attached at **Appendix A** are details of both fixed and permanent exclusions by area, with comparisons from previous years.
- 2.2 Fixed-term exclusions over the county have remained relatively static in 2005/06 having risen quite sharply in 2004/05. Within the Eastern Area, however, fixed-term exclusions have risen both in 2004/05 and 2005/06. This is also true for the Nuneaton & Bedworth and North Warwickshire Areas,

whilst the Central and Southern Areas have seen a fall in the last academic year.

- 2.3 The Education and Inspections Act 2006 places a new responsibility on schools to make arrangements for full-time education for students from the sixth day of a fixed-term exclusion within any school year. The expectation is that schools will make such arrangements by means of area collaborations, perhaps agreeing that a Learning Support Unit attached to a particular secondary school within each area will take these pupils. In the Eastern Area, a total of 134 students were excluded for more than five days in the 2005/06 academic year, which is a relatively high figure compared to other areas.
- 2.4 Permanent exclusions across the county reduced from 146 in 2004/05 to 119 in 2005/06. However, they remained high in the Eastern Area, with 31 permanent exclusions in 2005/06 against 27 in the previous academic year. Of these, four were in the primary phase and 27 in the secondary phase. Numbers were reduced in all other areas except the Central Area.
- 2.5 So far this academic year, numbers of permanent exclusions in the Eastern Area appear similar to last year. As of 15th December 2005, one primary and six secondary students received fixed-term exclusions. As of 15th December 2006, two primary and five secondary students had been excluded permanently.
- 2.6 In the Eastern Area, as across the county, by far the largest proportion of permanent exclusions are due to persistent disruptive behaviour. Analysis by gender, ethnic group and year group is not available currently by area. However, county wide, white British boys make up by far the highest excluded group, representing 90% of all excluded pupils. As might be expected, exclusion becomes more likely as students progress through their school careers, with highest exclusion rates in Years 10 and 11.
- 2.7 Permanent exclusion figures for the whole of England are published a year in arrears, and therefore 2005/06 data is not yet available. In 2004/05, however, Warwickshire excluded 0.37% of its total secondary school population. Within the West Midlands, the average secondary exclusion rate was 0.24%. Comparisons with benchmarking authorities are as follows:

Bedfordshire	0.30%	Oxfordshire	0.08%
Cheshire	0.28%	Shropshire	0.30%
Derbyshire	0.23%	Solihull	0.35%
Essex	0.16%	Staffordshire	0.20%
Herefordshire	0.22%	Warwickshire	0.37%
Kent	0.30%	West Sussex	0.32%
Lancashire	0.31%	Worcestershire	0.06%
Leicestershire	0.25%		
Northamptonshire	0.25%	England	0.24%

2.8 Warwickshire's permanent exclusion figures can therefore be seen as high by comparison with benchmark authorities. Clearly, continuing high exclusion figures across the Eastern Area are therefore of concern. It is important that the measures to be introduced across the county from January 2007 have a positive impact on exclusions. These measures are described in more detail in paragraph 3 below.

3. New initiatives: Strategy for the inclusion of pupils with emotional, behavioural and social difficulties

3.1 The common feature of best performing authorities above is the introduction of a system of managed transfers or 'fresh starts' for students who are at risk of permanent exclusion. Within Warwickshire, a proposed system of managed transfers, within the context of a revised strategy for managing behaviour, has been under consultation for some time. Such a system would reduce overall exclusions and the number of permanently excluded students awaiting re-integration to mainstream schools, and therefore free up Pupil Reintegration Unit resources. These resources could then be directed into supporting students on managed transfers.

3.2 The Behaviour Strategy was launched, following Cabinet agreement, in December 2006 and implementation of this strategy will be ongoing from January 2007. Managed transfers will be facilitated by the Area Behaviour Panels, attended by all the headteachers in an area or their representatives, and chaired by a headteacher. A support plan, including potential financial resources and back up from local authority services, will accompany a student who undertakes a managed transfer. A student would only be considered for a transfer when other strategies to allow them to remain in school had been exhausted. The wider Behaviour Strategy will detail plans to improve provision in schools for maintaining vulnerable students and co-ordination of external support. In Rugby, support for vulnerable students and their families will build upon good practice developed within the Enhanced Support Services pilot. Parents will be involved in every stage of the planning for their child.

3.3 An essential feature of such a scheme is the co-operation of all headteachers within each area. Initial agreement has been reached, but the details for each local area are now being negotiated. Visits to the Rugby Area Panels will be undertaken during January 2007, for further discussion and consultation. It is anticipated that managed transfers will be in place by the end of this academic year.

4. Recommendations

Members are asked to note the information given on exclusions from school, lend their support to the introduction of new strategies and comment further as appropriate.

MARION DAVIS
Strategic Director for Children,
Young People and Families

Saltisford Office Park
Ansell Way
Warwick

9th January 2007

COUNTY ANALYSIS OF EXCLUSIONS 2005-6

(Fixed Term includes Permanent - Reinstated)

NB: These figures are based on the data as provided by schools via the Online Exclusions System

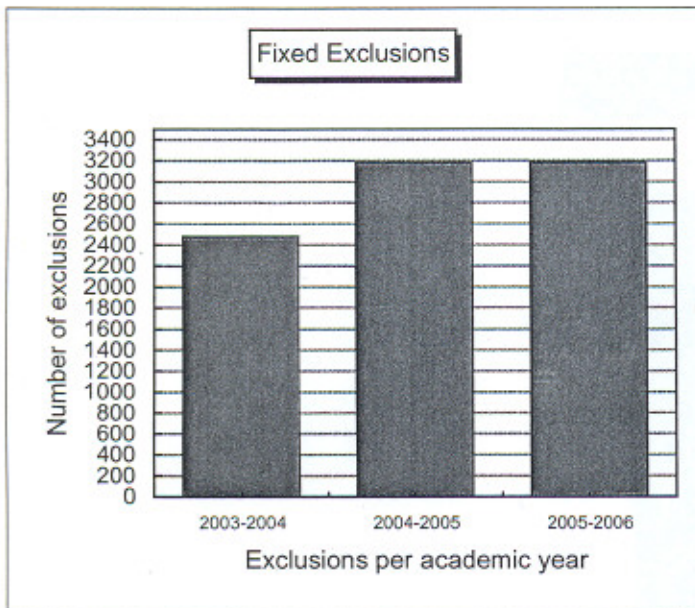
NB: The exclusions for all PRUs are represented within the Eastern/Rugby Area

NB: The latest figures have been calculated on the date below and therefore reflect the data at that time

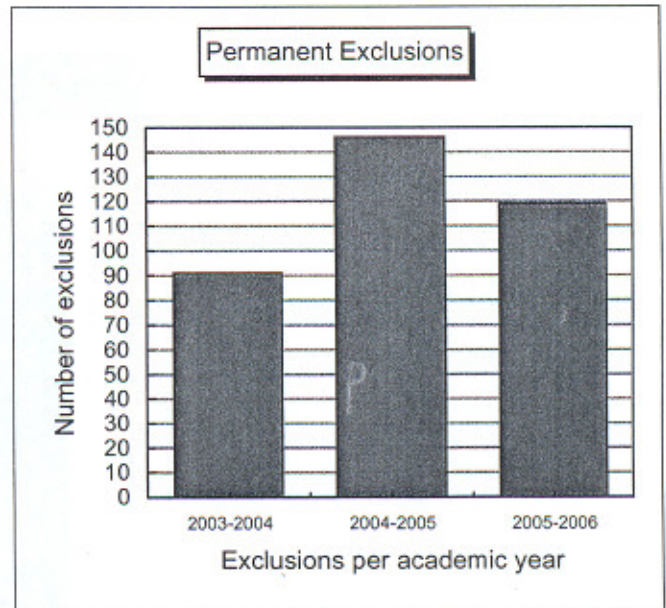
1. NUMBER OF EXCLUSIONS 2001/2-2005/6

EXCLUSION TYPE	2001-2002	2002-2003	2003-2004	2004-2005	2005-2006
FIXED	2099	2065	2477	3183	3186
PERMANENT	94	65	91	146	119
TOTAL	2193	2130	2568	3329	3305

2a. FIXED TERM EXCLUSIONS 2003/4-2005/6



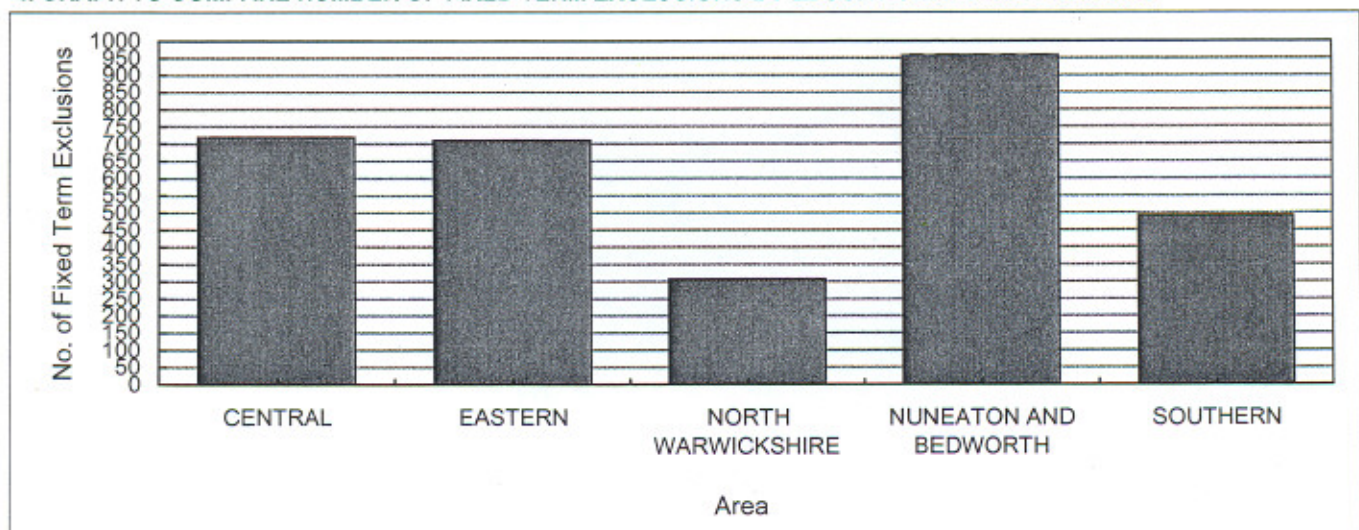
2b. PERMANENT EXCLUSIONS 2003/4-2005/6



3. NUMBER OF FIXED TERM EXCLUSIONS BY EDUCATIONAL AREA 2002/3-2005/6

	CENTRAL	EASTERN	NORTH WARWICKSHIRE	NUNEATON AND BEDWORTH	SOUTHERN
2002-2003	437	588	150	547	343
2003-2004	635	571	213	662	396
2004-2005	825	638	263	925	532
2005-2006	719	710	306	959	492

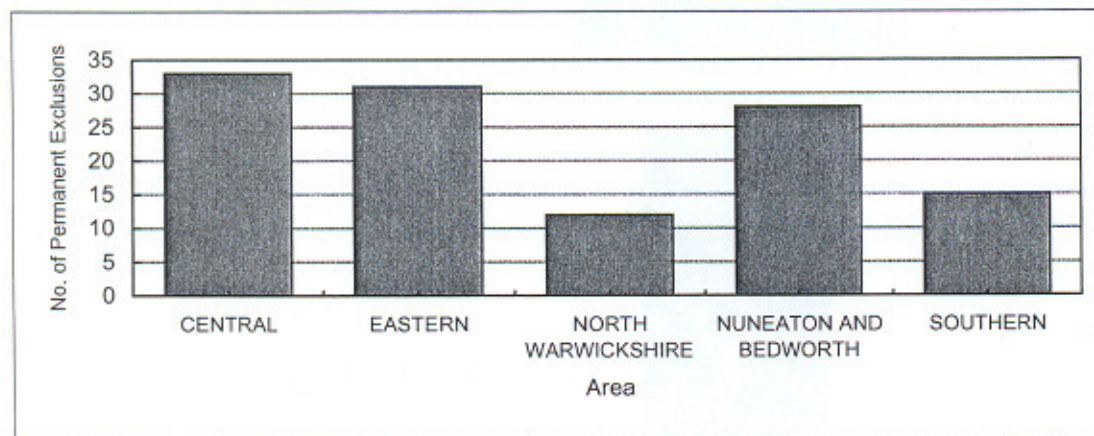
4. GRAPH TO COMPARE NUMBER OF FIXED TERM EXCLUSIONS BY EDUCATIONAL AREA 2005-2006



5. NUMBER OF PERMANENT EXCLUSIONS BY EDUCATIONAL AREA 2002/3-2005/6

	CENTRAL	EASTERN	NORTH WARWICKSHIRE	NUNEATON AND BEDWORTH	SOUTHERN
2002-2003	14	8	7	24	12
2003-2004	20	24	4	28	15
2004-2005	32	27	12	54	21
2005-2006	33	31	12	28	15

6. GRAPH TO COMPARE NUMBER OF PERMANENT EXCLUSIONS BY EDUCATIONAL AREA 2005-6



7. NUMBER OF PERMANENT EXCLUSIONS AS % OF SCHOOL POPULATION BY AREA 2002/3-2005/6

	CENTRAL	EASTERN	NORTH WARWICKSHIRE	NUNEATON AND BEDWORTH	SOUTHERN
2002-2003	0.07%	0.06%	0.09%	0.11%	0.08%
2003-2004	0.10%	0.17%	0.05%	0.13%	0.10%
2004-2005	0.17%	0.19%	0.15%	0.25%	0.14%
2005-2006	0.17%	0.22%	0.15%	0.13%	0.10%

8. NUMBER OF PUPILS EXCLUDED FOR MORE THAN FIVE DAYS IN ONE TERM IN 2005-2006 BY EDUCATIONAL AREA

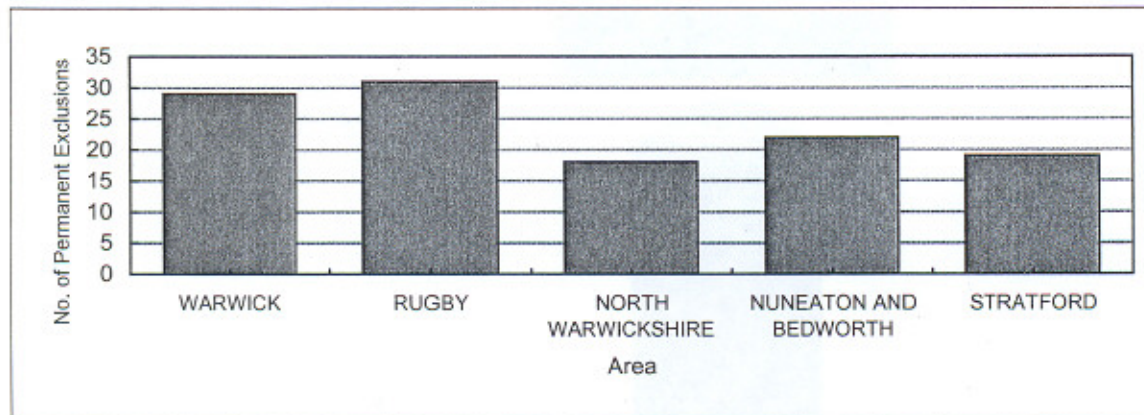
	CENTRAL	EASTERN	NORTH WARWICKSHIRE	NUNEATON AND BEDWORTH	SOUTHERN
Primary	15	17	1	21	6
Secondary	99	116	23	125	50
Special	1	1	1	4	21
TOTAL	115	134	25	150	77

Regarding all PRUs there are 7 occurrences where pupils have been excluded for more than five days in one term

9. NUMBER OF PERMANENT EXCLUSIONS BY DISTRICT AREA 2002/3-2005/6

	WARWICK	RUGBY	NORTH WARWICKSHIRE	NUNEATON AND BEDWORTH	STRATFORD
2002-2003	9	9	9	22	16
2003-2004	17	24	8	24	18
2004-2005	32	27	22	44	21
2005-2006	29	31	18	22	19

9A. GRAPH TO COMPARE NUMBER OF PERMANENT EXCLUSIONS BY DISTRICT AREA 2005-2006



10. EXCLUSIONS BY PHASE OF SCHOOL 2003/4-2005/6

YEAR	2003-2004		2004-2005		2005-2006	
	PRIMARY / SPECIAL	SECONDARY/ SPECIAL	PRIMARY / SPECIAL	SECONDARY/ SPECIAL	PRIMARY / SPECIAL	SECONDARY/ SPECIAL
FIXED	271	2206	354	2829	358	2825
PERMANENT	6	85	15	131	14	105
TOTAL	277	2291	369	2960	372	2930

NB: This is based on NCY. In 2005-6 there are 3 records where NCY is incomplete, however based on the DOB provided 2 of these pupils are in Primary Phase and 1 in Secondary.

11. GENDER OF EXCLUDED PUPILS 2003/4-2005/6

YEAR	2003-2004		2004-2005		2005-2006	
	MALE	FEMALE	MALE	FEMALE	MALE	FEMALE
FIXED	1840	637	2459	724	2441	745
PERMANENT	67	24	119	27	96	23
TOTAL	1907	661	2578	751	2537	768
%	74%	26%	77%	23%	77%	23%